

Cable and Hose Reels / Balancer

Program 0402



CONDUCTIX
wampfler

Ⓞ DELACHAUX GROUP

Contents

Spring Operated Cable Reels

| | |
|-----------------------------|---|
| Cable Reel | 3 |
| Barrier Rope Reel | 5 |

Spring Operated Hose Reels

| | |
|--|---|
| Hose Reel enclosed design | 7 |
| Hose Balancer | 8 |
| Installation Example Hose Reels exposed design | 9 |

Accessories for Cable and Hose Reels

| | |
|-----------------------------------|----|
| Roller Guide. | 15 |
| Cable Supporting Roller | 16 |
| Single Rollers. | 16 |
| Round Rubber End Stop | 17 |

Retractors

| | |
|--|----|
| Retractors without Blocking Device | 19 |
| Retractors with Blocking Device | 21 |

Balancers

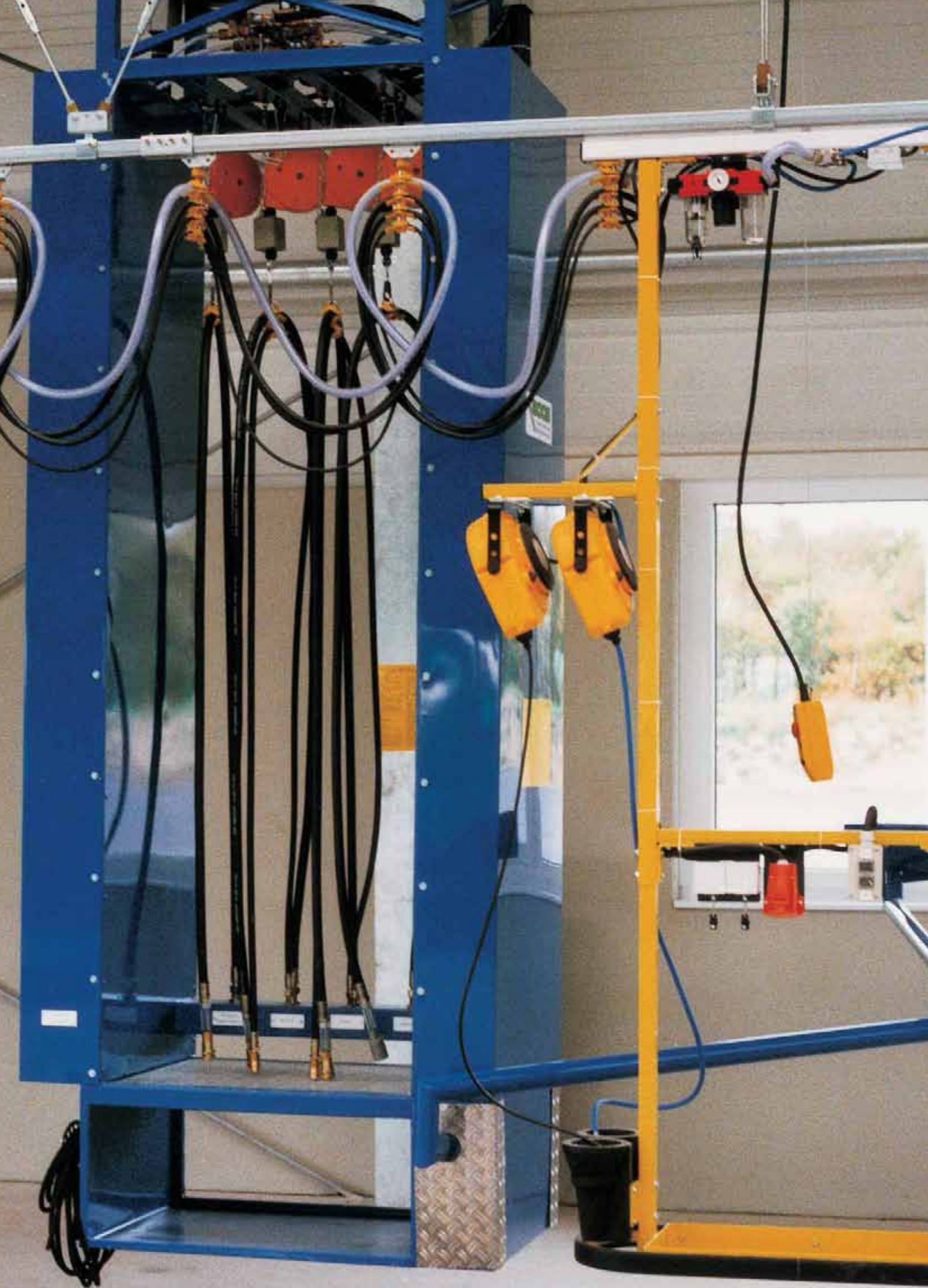
| | |
|--|----|
| Balancers with Perfect Balance | 23 |
| Balancer with Optimum Balance of Weight. | 24 |

Accessories for Balancer

| | |
|------------------------------|----|
| Spring safety hook | 27 |
| Safety Chain | 27 |
| Release Chain | 27 |

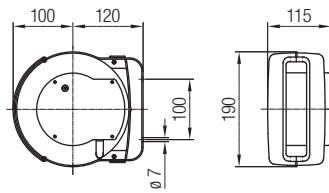
Application Directives Information

| | |
|--------------------------------|----|
| Cable and Hose Reels | 28 |
| Balancer | 28 |
| Warning | 28 |
| Information | 28 |



Spring Operated Cable Reels

Cable Reel 040610

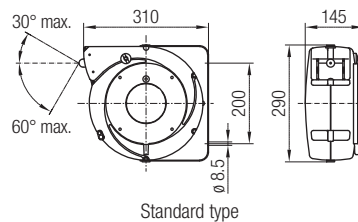


Technical details

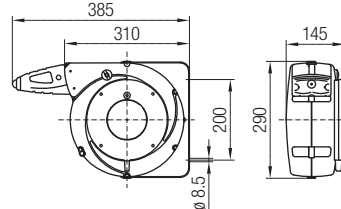
- Case: plastic
- Protection type: IP 42
- Voltage: max. 500V
- Cable: H05VV-F
- Cable outside reel 1 m
- Operating temperature: -5°C to +40°C
- Manufactured according EN 61242 and EN 60335-1
- Overheating protection installed
- Backstop with toothed locking device
- Double earth connection

| Order No. | No. of Cores + Cross Section [mm ²] | Coiled Length [m] | Cable Outer-ø [mm] | Cable Wound up [W] | Voltage [V] | Weight [kg] |
|---------------|---|-------------------|--------------------|--------------------|-------------|-------------|
| 040610-02x1,0 | 2x1.0 | 7 | 6.5 | 1100 | 230 | 3.0 |
| 040610-02x1,5 | 2x1.5 | 5 | 7.5 | 1300 | | |
| 040610-03x1,0 | 3x1.0 | 6 | 7.0 | 1100 | | |
| 040610-03x1,5 | 3x1.5 | 5 | 8.5 | 1400 | | |

Cable Reel 040620 (Standard) and 040621 (with Nozzle)



Standard type



Type with nozzle

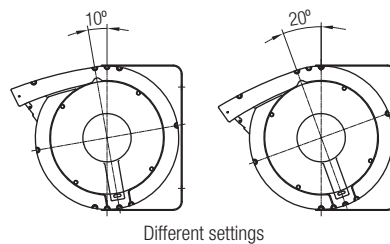
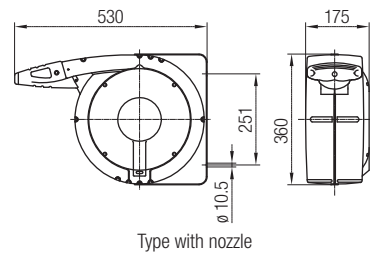
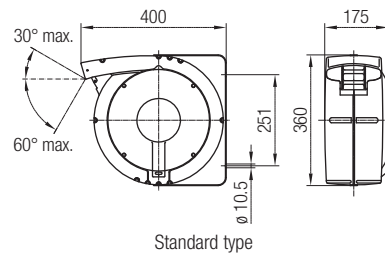
Technical details

- Case: plastic
- Mounting bracket: wall and ceiling attachment
- Protection type:
 - IP 42 (standard);
 - IP 43 (with nozzle)
- Voltage: max. 500V
- Cable:
 - 1 pole, H05V-F
 - 2-8 pole, H05VV-F CEI 20-35
- Installed protection device against overheating on the 2+3-pole reels
- Manufactured according EN 61242 and EN 60335-1
- Cable outside reel 1.5 m
- Backstop with toothed locking device
- Operating temperature: -5°C to +40°C
- Double earth connection

| Order No. Standard | Order No. with Nozzle | No. of Cores + Cross Section [mm ²] | Coiled Length [m] | Cable Outer-ø [mm] | Cable Wound up [W/A] | Voltage [V] | Weight [kg] | | |
|--------------------|-----------------------|---|-------------------|--------------------|----------------------|-------------|-------------|-----|--|
| 040620-01x2,5 | 040621-01x2,5 | 1x2.5 | 15.0 | 5.5 | - | 230 | 4.0 | | |
| 040620-01x6,0 | 040621-01x6,0 | 1x6.0 | 12.5 | 5.5 | | | | | |
| 040620-01x16,0 | 040621-01x16,0 | 1x16 | 8.5 | 8.0 | | | | | |
| 040620-02x1,0 | 040621-02x1,0 | 2x1.0 | 14.0 | 6.5 | 900W | | | 400 | |
| 040620-02x1,5 | 040621-02x1,5 | 2x1.5 | 11.0 | 7.5 | 1100W | | | | |
| 040620-02x2,5 | 040621-02x2,5 | 2x2.5 | 8.5 | 9.5 | 1750W | | | | |
| 040620-03x1,0 | 040621-03x1,0 | 3x1.0 | 12.5 | 7.0 | 900W | | | | |
| 040620-03x1,5 | 040621-03x1,5 | 3x1.5 | 10.0 | 8.5 | 1200W | | | | |
| 040620-03x2,5 | 040621-03x2,5 | 3x2.5 | 7.0 | 10.0 | 1850W | | | | |
| 040620-04x1,0 | 040621-04x1,0 | 4x1.0 | 10.5 | 8.0 | 1100W | | | - | |
| 040620-04x1,5 | 040621-04x1,5 | 4x1.5 | 8.0 | 9.5 | 1350W | | | | |
| 040620-04x2,5 | 040621-04x2,5 | 4x2.5 | 5.5 | 11.0 | 2000W | | | | |
| 040620-05x1,0 | 040621-05x1,0 | 5x1.0 | 7.5 | 9.0 | 1000W | - | | | |
| 040620-05x1,5 | 040621-05x1,5 | 5x1.5 | 5.5 | 10.5 | 1350W | | | | |
| 040620-07x1,0 | 040621-07x1,0 | 7x1.0 | 6.0 | 10.0 | 3.0A | | | | |
| 040620-07x1,5 | 040621-07x1,5 | 7x1.5 | 5.5 | 12.0 | 4.5A | | | | |
| 040620-08x1,0 | 040621-08x1,0 | 8x1.0 | 5.5 | 11.0 | 3.0A | | | | |

Spring Operated Cable Reels

Cable Reel 040630 (Standard) and 040634 (with Nozzle)



Technical details

- Case: aluminum
- Protection type:
 - IP 42 (standard)
 - IP 43 (with nozzle)
- Voltage: max. 500V
- Cable: H05VV-F
- Manufactured according EN 61242 and EN 60335-1
- Cable outside reel 2 m
- With locking device
- Operating temperature: -5°C to +40°C
- Double earth connection

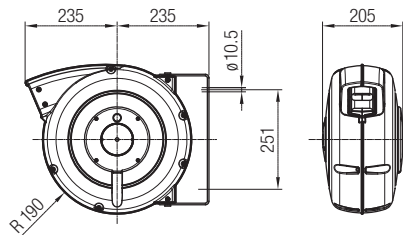
Note

- The cable reels shall be considered as part of a complex unit/system.
- Prior to commissioning the cable reel must be provided with an appropriate safety device or automatic circuit breaker, taking the operation "reel wound up" (see type plate or table) as a base for the layout of the safety elements.

| Order No. Standard | Order No. with Nozzle | No. of Cores + Cross Section [mm ²] | Coiled Length [m] | Cable Outer-ø [mm] | Cable Wound up [W/A] | Voltage [V] | Weight [kg] |
|--------------------|-----------------------|---|-------------------|--------------------|----------------------|-------------|-------------|
| 040630-03x1,5 | 040634-03x1,5 | 3x1.5 | 24 | 8.5 | 1100W | 230 | 14.0 |
| 040630-03x2,5 | 040634-03x2,5 | 3x2.5 | 15 | 10.0 | 2000W | | |
| 040630-04x1,0 | 040634-04x1,0 | 4x1.0 | 24 | 8.0 | 800W | 400 | |
| 040630-04x1,5 | 040634-04x1,5 | 4x1.5 | 21 | 9.5 | 1100W | | |
| 040630-04x2,5 | 040634-04x2,5 | 4x2.5 | 15 | 11.0 | 2000W | | |
| 040630-04x4,0 | 040634-04x4,0 | 4x4.0 | 8 | 14.0 | 3000W | | |
| 040630-05x1,0 | 040634-05x1,0 | 5x1.0 | 16 | 9.0 | 800W | | |
| 040630-05x1,5 | 040634-05x1,5 | 5x1.5 | 15 | 10.5 | 1500W | | |
| 040630-05x2,5 | 040634-05x2,5 | 5x2.5 | 10 | 12.5 | 2000W | | |
| 040630-07x1,0 | 040634-07x1,0 | 7x1.0 | 16 | 10.0 | 3.0A | | |
| 040630-07x1,5 | 040634-07x1,5 | 7x1.5 | 9 | 12.0 | 4.5A | | |
| 040630-08x1,0 | 040634-08x1,0 | 8x1.0 | 11 | 11.0 | 3.0A | | |
| 040630-08x1,5 | 040634-08x1,5 | 8x1.5 | 8 | 13.0 | 4.5A | | |
| 040630-08x2,5 | 040634-08x2,5 | 8x2.5 | 6 | 15.0 | 7.5A | | |
| 040630-10x1,0 | 040634-10x1,0 | 10x1.0 | 8 | 13.0 | 3.0A | | |
| 040630-10x1,5 | 040634-10x1,5 | 10x1.5 | 6 | 15.0 | 4.5A | | |
| 040630-12x1,0 | 040634-12x1,0 | 12x1.0 | 10 | 13.5 | 3.0A | | |
| 040630-12x1,5 | 040634-12x1,5 | 12x1.5 | 6 | 15.5 | 4.5A | | |
| 040630-16x1,0 | 040634-16x1,0 | 16x1.0 | 6 | 15.0 | 3.0A | | |

Spring Operated Cable Reels

Cable Reel 040635



Technical details

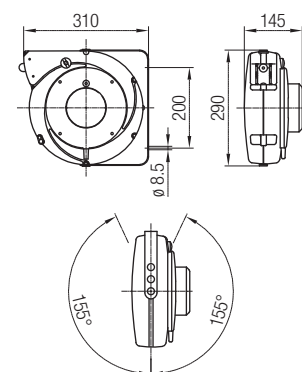
- Case: plastic
- Swiveling bracket
- Roller cable guide aperture
- Clamping bar on supply side
- Protection type: IP 42
- Voltage: max. 500V
- Cable:
 - 1 pole H05V-F
 - 2-5 pole H05VV-F
- Manufactured according EN 61242 and EN 60335-1
- Operating temperature: -5°C to +40°C
- Cable outside reel 2 m
- Backstop with toothed locking device
- Double earth connection

Note

- The cable reels shall be considered as part of a complex unit/system.
- Prior to commissioning the cable reel must be provided with an appropriate safety device or automatic circuit breaker, taking the operation "reel wound up" (see type plate or table) as a base for the layout of the safety elements.

| Order No. Standard | No. of Cores + Cross Section [mm ²] | Coiled Length [m] | Cable Outer- ϕ [mm] | Cable Wound up [W] | Voltage [V] | Weight [kg] |
|--------------------|---|-------------------|--------------------------|--------------------|-------------|-------------|
| 040635-01x16,0 | 1 x 16 | 20 | 8.0 | - | - | 9.0 |
| 040635-02x1,5 | 2 x 1.5 | 25 | 7.5 | 1100 | 230 | |
| 040635-03x1,5 | 3 x 1.5 | 25 | 8.5 | 1100 | | |
| 040635-03x2,5 | 3 x 2.5 | 20 | 10.0 | 2000 | | |
| 040635-04x1,5 | 4 x 1.5 | 25 | 9.5 | 1100 | 400 | |
| 040635-04x2,5 | 4 x 2.5 | 18 | 11.0 | 2000 | | |
| 040635-05x1,5 | 5 x 1.5 | 20 | 10.5 | 1500 | | |
| 040635-05x2,5 | 5 x 2.5 | 15 | 12.5 | 2000 | | |

Barrier Rope Reel 040711-1



Order No. 040711-1

Technical details

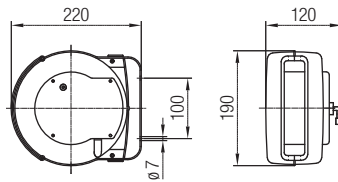
- Case: plastic
- Mounting bracket: wall fixing
- With blocking device
- Striped rope 4 cm wide

- Rope length: 16 m
- Weight: 2.5 kg
- Application: temporary blockade at danger areas, such as mines



Spring Operated Hose Reels

Hose Reel 040410

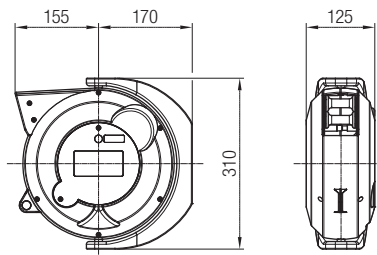


Technical details

- Case: plastic
- Mounting bracket: wall and ceiling fixing
- Ratchet lock, every 0.5 m
- Hose: polyurethan
- Entry connection for hose internal diameter: 6 mm
- External hose: 1 m
- Operating temperature: +5°C to +40°C
- Application: for industry and DIY
- Medium: air and cold water

| Order No. | Hose ID [mm] | Coiled Length [m] | Fitting Hose Outlet Male | Pressure [bar] | Weight [kg] |
|---------------|--------------|-------------------|--------------------------|----------------|-------------|
| 040410-06x5,5 | 6 | 5.5 | 1/4" | 12 | 2.3 |

Hose Reel 040422

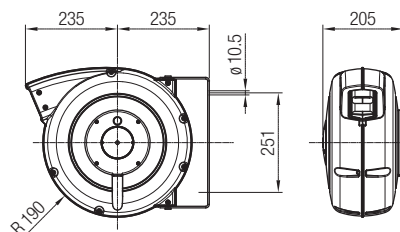


Technical details

- Case: plastic
- Mounting bracket: swivelling plastic bracket
- Easy to switch of ratchet, stop every 0.5 m
- Hose: polyurethane shining
- External hose: 1 m
- Connecting hose: 1.5 m
- Operating temperature: +5°C to +40°C
- Medium: air and cold water

| Order No. | Hose ID [mm] | Coiled Length [m] | Fitting Inlet/ Outlet Male | Pressure [bar] | Weight [kg] |
|--------------|--------------|-------------------|----------------------------|----------------|-------------|
| 040422-06x10 | 6 | 10 | 1/4" | 15 | 4.0 |
| 040422-08x9 | 8 | 9 | | | |

Hose Reel 040438



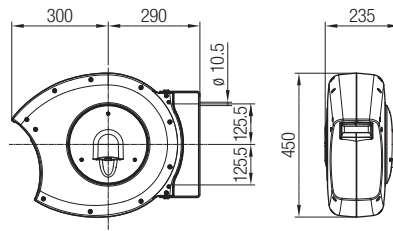
Technical details

- Case: impact resistant plastic
- Support: swivelling metal bracket
- Automatic lock for hose locking device at the desired length
- Hose: polyurethane shining
- External hose: 1 m
- Connecting hose: 1.5 m (without fitting)
- Operating temperature: +5°C to +40°C
- Medium: air and cold water

| Order No. | Hose ID [mm] | Coiled Length [m] | Fitting Outlet Male | Pressure [bar] | Weight [kg] |
|--------------|--------------|-------------------|---------------------|----------------|-------------|
| 040438-08x15 | 8 | 15 | 1/4" | 15 | 7.0 |
| 040438-10x15 | 10 | | 3/8" | | |

Spring Operated Hose Reels

Hose Reel 040431

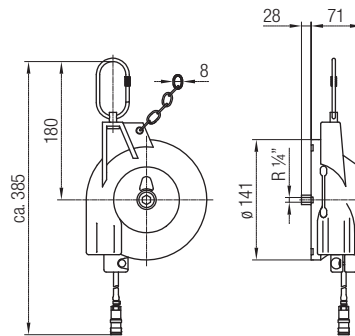


Technical details

- Case: plastic
- Support: swiveling bracket
- Automatic lock for hose locking device at the desired length
- Hose: polyurethan shining
- External hose 1 m
- Operating temperature: +5°C to +40°C
- Medium: air and cold water

| Order No. | Medium | Hose ID [mm] | Coiled Length [m] | Fitting Hose Outlet Male | Pressure [bar] | Weight [kg] |
|--------------|--------------------|--------------|-------------------|--------------------------|----------------|-------------|
| 040431-10x24 | Air and cold water | 10.0 | 24 | 3/8" | 15 | 10 |
| 040431-13x15 | | 12.5 | 15 | 1/2" | | |

Hose Balancer 040409



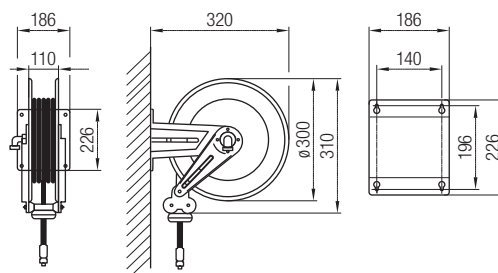
Technical details

- Case: impact and abrasion resistant plastic
- Case cover: lacquered steel
- Rope reel: wear resistant plastic
- Suspension: rotating screw snap hook
- Riveted special bearing spring
- Air hose: wear resistant to attach the load
- Air flow rate: with 6 bar approx. 900 l/min
- With safety chain
- Operating temperature: +5°C to +40°C

| Order No. | Medium | Load Capacity [daN] | Hose ID [mm] | Length [m] | Pressure [bar] | Weight [kg] |
|-----------|----------------|---------------------|--------------|------------|----------------|-------------|
| 040409-1 | Compressed air | 0.4 - 1.2 | 5 | 0.8 | 10 | 1.2 |
| 040409-2 | | 1.2 - 2.2 | | | | 1.3 |
| 040409-3 | | 2.2 - 3.0 | | | | 1.4 |

Spring Operated Hose Reels

Hose Reel 040461

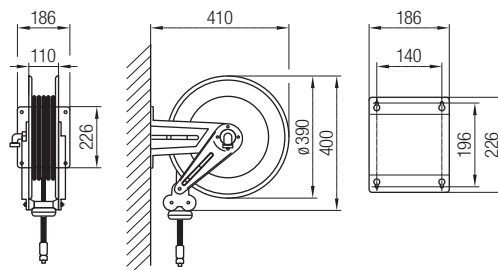


Technical details

- Case: varnished steel
- Mounting bracket: for wall, ceiling or ground fixing
- With locking device
- End stop adjustable
- Hose: polyurethane blue
- Medium: air and cold water
- Operating temperature: +5°C to +40°C

| Order No. | Hose ID [mm] | Coiled Length [m] | Fitting | | Pressure [bar] | Weight [kg] |
|--------------|--------------|-------------------|------------|------------------|----------------|-------------|
| | | | Inlet Male | Hose Outlet Male | | |
| 040461-10x13 | 10 | 13 | G 3/8" | G 3/8" | 20 | 9.2 |
| 040461-08x15 | 8 | 15 | | G 1/4" | | 9.4 |

Hose Reel 040462

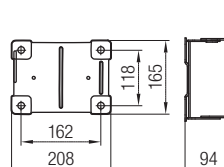
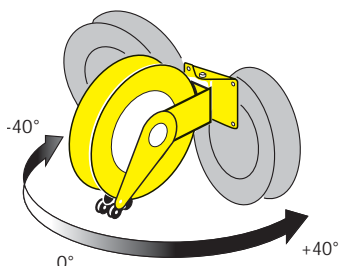


Technical details

- Case: varnished steel
- Mounting bracket: for wall, ceiling or ground fixing
- With locking device
- End stop adjustable
- Hose: rubber black
- Medium: water up to 130°C
- Operating temperature: +5°C to +40°C

| Order No. | Hose ID [mm] | Coiled Length [m] | Fitting | | Pressure [bar] | Weight [kg] |
|--------------|--------------|-------------------|--------------|------------------|----------------|-------------|
| | | | Inlet Female | Hose Outlet Male | | |
| 040462-10x12 | 3/8" | 12 | G 1/2" | G 3/8" | 100 | 14.5 |
| 040462-10x17 | | 17 | | | | 16.0 |

Swiveling Wall Attachment for Hose Reel 040461-.. and 040462-..



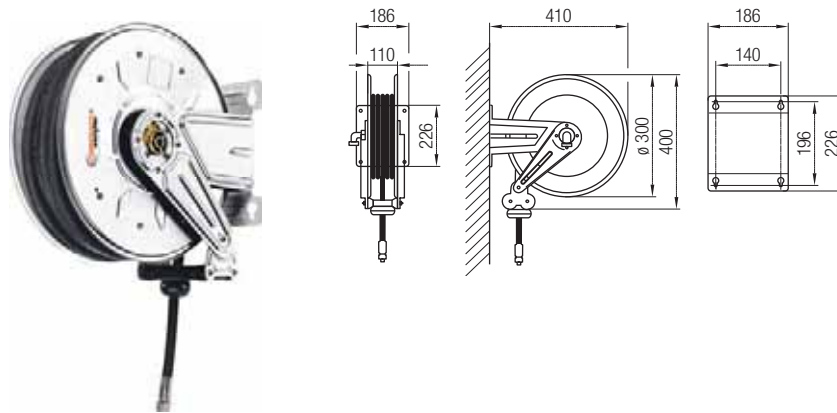
Order No. 040461-01

Technical details

- Material: varnished steel
- Weight: 2 kg

Spring Operated Hose Reels

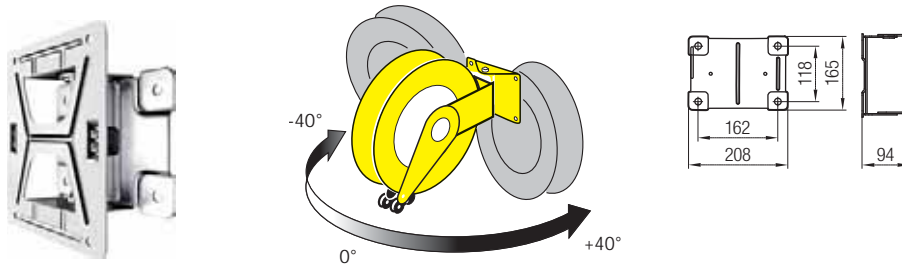
Stainless Steel Hose Reel 040463



- Technical details**
- Case: stainless steel
 - Mounting bracket: for wall, ceiling or ground fixing
 - With locking device
 - End stop adjustable
 - Hose: rubber black
 - Operating temperature: +5°C to +40°C

| Order No. | Medium | Hose ID [mm] | Coiled Length [m] | Fitting | | Pressure [bar] | Weight [kg] |
|--------------|-------------------|--------------|-------------------|--------------|------------------|----------------|-------------|
| | | | | Inlet Female | Hose Outlet Male | | |
| 040463-10x18 | Air and water | 3/8" | 18 | G 3/8" | G 3/8" | 20 | 16.0 |
| 040463-13x10 | Water up to 150°C | 1/2" | 10 | G 1/2" | G 1/2" | 100 | 16.5 |

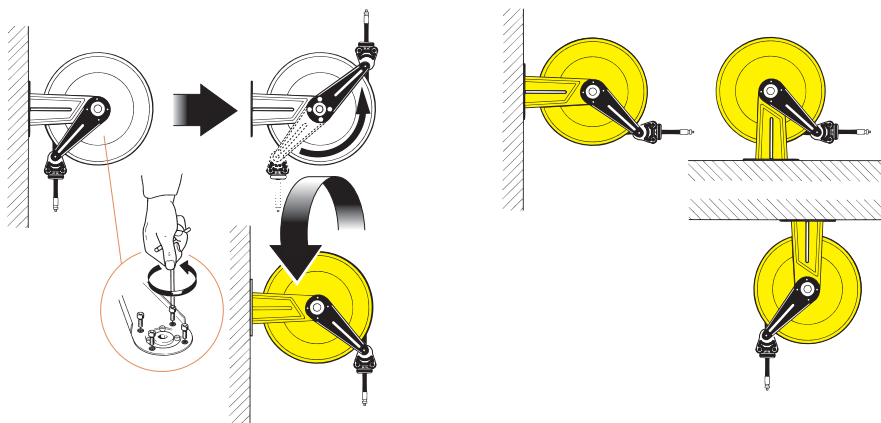
Swiveling Wall Attachment for Hose Reel 040463-..



Order No. 040463-01

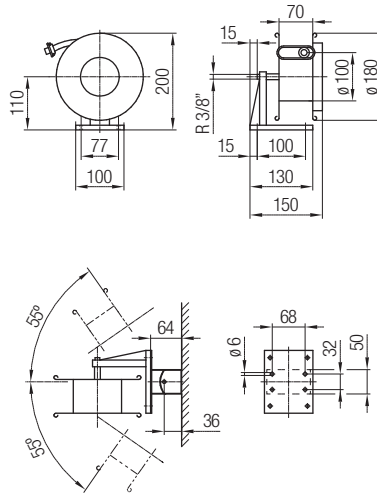
- Technical details**
- Material: stainless steel
 - Weight: 2 kg

Installation Example Hose Reel 040461, 040462 and 040463



Spring Operated Hose Reels

Hose Reel 040449



Technical details

- Open reel: varnished steel
- Mounting bracket: for wall fixing
- Interior disengageable locking device; 16 engaging possibilities per revolution
- Ball bearing
- Hose: rubber; oil and fuel resistant
- Swiveling hose guide arm
- Adjustable rubber end stop
- Connecting hose: approx. 0.75 m, hose connection at the coiled hose end
- Operating temperature: -20°C to +60°C
- Spring tension when pulled out:
 - approx. 2.5 kg initial
 - approx. 8 kg final
- Medium: air

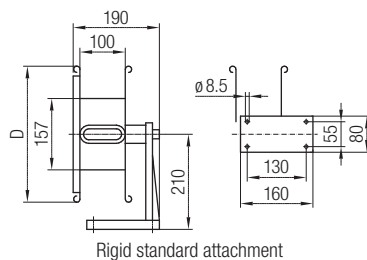
| Order No. | Hose ID [mm] | Coiled Length [m] | Fitting | | Pressure [bar] | Weight [kg] |
|---------------|--------------|-------------------|--------------|------------------|----------------|-------------|
| | | | Inlet Female | Hose Outlet Male | | |
| 040449-06x5,0 | 6 | 5 | 3/8" | 1/4" | 20 | 3.5 |
| 040449-09x3,0 | 9 | 3 | 3/8" | 3/8" | | |

Accessories for Hose Reel 040449

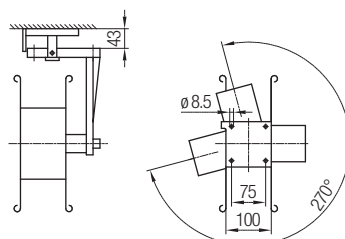
| Order No. | Description | Weight [kg] |
|-----------|--|-------------|
| 040449-10 | Plate for wall mounting 110° rotation | 6.0 kg |
| 040449-11 | Plate for ceiling mounting 270° rotation | |

Spring Operated Hose Reels

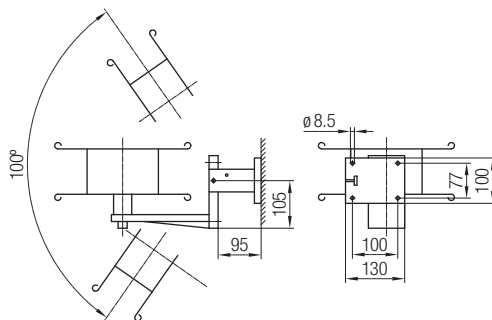
Hose Reel 040450



Rigid standard attachment



Rotating ceiling attachment



Swiveling wall attachment

Technical details

- Open reel: varnished steel
- Mounting bracket: for wall, ceiling and ground fixing
- Wall bracket 110° rotation
- Ceiling bracket 270° rotation
- Interior disengageable locking device; 16 engaging possibilities per revolution
- Ball bearing
- Hose: rubber; oil and fuel resistant
- Swiveling hose guide arm
- Adjustable rubber end stop
- Connecting hose: approx. 0.75 m, hose connection at the coiled hose end
- Spring tension when pulled out:
 - approx. 3 kg at the beginning
 - approx. 7 kg to 12 kg at the end
- Medium air: -20°C to +60°C
- Medium water: up to +40°C

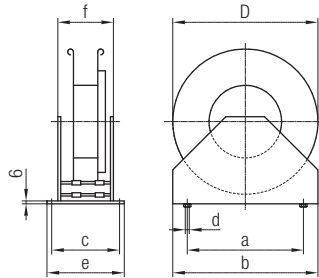
| Order No. | Hose ID [mm] | Coiled Length [m] | Inlet Female | Fitting Hose Outlet Male | D [mm] | Pressure [bar] | Weight [kg] |
|--------------|--------------|-------------------|--------------|--------------------------|--------|----------------|-------------|
| 040450-06x12 | 6 | 12 | 3/8" | 1/4" | 300 | 20 | 8.5 |
| 040450-06x15 | | 15 | | | 340 | | 10.5 |
| 040450-06x20 | | 20 | | | 340 | | 11.5 |
| 040450-09x8 | 9 | 8 | | 3/8" | 300 | | 7.5 |
| 040450-09x12 | | 12 | | | 340 | | 11.0 |
| 040450-09x15 | | 15 | | | 340 | | 11.0 |

Accessories for Hose Reel 040450

| Order No. | Description | Weight [kg] |
|-----------|--|-------------|
| 040450-10 | Plate for wall mounting 110° rotation | 1.0 kg |
| 040450-11 | Plate for ceiling mounting 270° rotation | |

Spring Operated Hose Reels

Hose Reel 040460

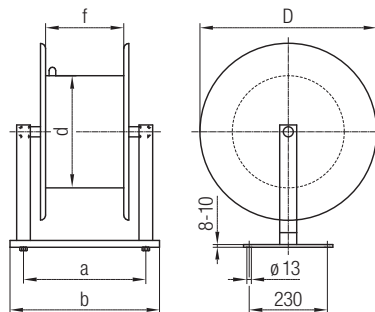


Technical details

- Open reel: varnished steel
- Mounting bracket: rigid for wall, ceiling or ground fixing
- 1 or 2 x per revolution; with external tension relief
- Ball bearing
- Hose: PVC, oil and fuel resistant
- Adjustable rubber stop
- Operating pressure: up to 20 bar
- Operating temperature: -20°C to +60°C
- Spring tension when pulled out:
 - approx. 3 kg initial
 - approx. 7 kg to 12 kg final
- Medium: air

| Order No. | Hose ID [mm] | Coiled Length [m] | Fitting | | Dimensions | | | | | | | Weight [kg] | |
|--------------|--------------|-------------------|------------|------------------|------------|--------|--------|--------|--------|--------|--------|-------------|------|
| | | | Inlet Male | Hose Outlet Male | D [mm] | a [mm] | b [mm] | c [mm] | d [mm] | e [mm] | f [mm] | | |
| 040460-06x12 | 6 | 12 | 3/8" | 1/4" | 340 | 280 | 340 | 140 | 8.5 | 160 | 115 | 10.0 | |
| 040460-06x20 | | 20 | | | 400 | 310 | 400 | 160 | 11.0 | 190 | 140 | 16.5 | |
| 040460-09x8 | 9 | 8 | | 3/8" | 3/8" | 340 | 280 | 340 | 140 | 8.5 | 160 | 115 | 9.0 |
| 040460-09x12 | | 12 | | | | 400 | 310 | 400 | 160 | 11.0 | 190 | 140 | 14.5 |
| 040460-09x20 | | 20 | | | | 450 | 375 | 465 | 160 | 11.0 | 190 | 150 | 20.0 |

Hose Reel 040483



Technical details

- Open reel: varnished steel
- Mounting bracket: wall, ceiling or ground fixing
- 2 x per revolution; with external tension relief
- Operating pressure: up to 30 bar
- Operating temperature: -20°C to +100°C
- Medium: compressed air, water, oil

| Order No. with Hose | Hose ID [mm] | Coiled Length [m] | Fitting | | D [mm] | d [mm] | Dimensions | | | Weight [kg] |
|---------------------|--------------|-------------------|--------------|--------------------|--------|--------|------------|--------|--------|-------------|
| | | | Inlet Female | Hose Outlet Female | | | a [mm] | b [mm] | f [mm] | |
| 040483-19x20 | 19 | 20 | 1" | 3/4" | 550 | 330 | 360 | 440 | 230 | 58 |
| 040483-19x30 | | 30 | | | 620 | | 360 | 440 | 230 | 75 |
| 040483-25x20 | 25 | 20 | 1" | 1" | 620 | | 360 | 440 | 230 | 68 |
| 040483-25x30 | | 30 | | | | | 530 | 600 | 390 | 100 |

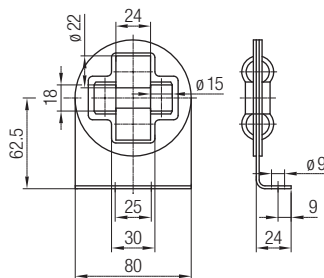
| Order No. without Hose | Hose ID [mm] | Coiled Length [m] | Fitting | | D [mm] | d [mm] | Dimensions | | | Weight [kg] |
|------------------------|--------------|-------------------|--------------|--------------------|--------|--------|------------|--------|--------|-------------|
| | | | Inlet Female | Hose Outlet Female | | | a [mm] | b [mm] | f [mm] | |
| 040480-19x20 | 19 | 20 | 1" | 3/4" | 550 | 330 | 360 | 440 | 230 | 44 |
| 040480-19x30 | | 30 | | | 620 | | 360 | 440 | 230 | 50 |
| 040480-25x20 | 25 | 20 | 1" | 1" | 620 | | 360 | 440 | 230 | 48 |
| 040480-25x30 | | 30 | | | | | 530 | 600 | 390 | 70 |



F.I.L 06

Accessories for Cable and Hose Reels

Roller Guide 4-fold on angle

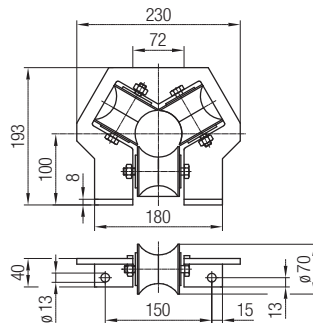


Order No. 040490-01

Technical details

- Case: galvanised steel
- Rollers: plastic
- Weight: 0.3 kg
- Operating temperature: -40°C to +60°C
- \varnothing max. 18 mm

Roller Guide 3-fold to open



Order No. 040491-04

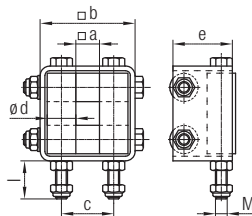
Technical details

- Case: galvanised steel
- Rollers: plastic; sealed ball bearings
- Weight: 2.3 kg
- Operating temperature: -40°C to +60°C
- \varnothing max. 72 mm

Special feature

The lower roller can be removed to install the cable.

Roller Guide 4-fold in the casing



Technical details

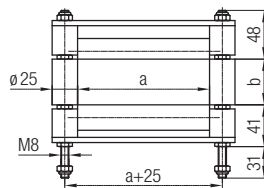
- Case: galvanised steel
- Rollers: plastic
- Screws: galvanised steel
- Operating temperature: -40°C to +60°C

Special feature

- Overall guidance without air gap,
- Small construction

| Order No. | a [mm] | b [mm] | c [mm] | d [mm] | e [mm] | l [mm] | M [mm] | Weight [kg] |
|-----------|--------|--------|--------|--------|--------|--------|--------|-------------|
| 040490-03 | 10 | 40 | 22 | 12 | 25 | 15 | 5 | 0.1 |
| 040490-04 | 20 | 50 | 32 | 12 | 25 | 15 | 5 | 0.2 |
| 040490-05 | 32 | 70 | 47 | 15 | 29 | 20 | 6 | 0.2 |

Roller Guide 4-fold



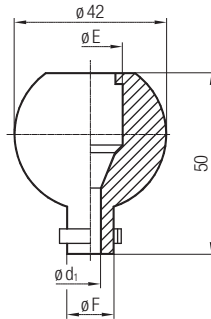
Technical details

- Brackets and screws: galvanised steel
- Rollers and end pieces: plastic to +60°C
- Dimension "a" and "b" can be adjusted to your requirements

| Order No. | a [mm] | b [mm] | Weight [kg] |
|-----------|--------|--------|-------------|
| 040490-06 | 130 | 45 | 0.7 |
| 040490-07 | 220 | 45 | 1.0 |
| 040490-08 | 60 | 60 | 0.3 |

Accessories for Cable and Hose Reels

Round Rubber End Stop Type A

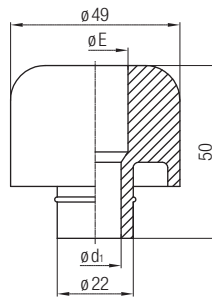


Technical details

- As position limitation e.g. for a certain suspension length. The fixed length will remain outside the reel.
- As limit buffer and damping device. Just connect the buffer with the desired press capacity to the cable. The buffer slides on the cable and prevents the control station from damages.
- The drilling can be slightly opened

| Order No. | Cable and Rope- ϕ [mm] | ϕE [mm] | ϕd_1 [mm] | ϕF [mm] | Weight [kg] |
|-----------|-----------------------------|---------------|-----------------|---------------|-------------|
| 040495-06 | 4 - 6 | 18 | 6 | 13 | 0.1 |
| 040495-08 | 6 - 8 | 20 | 8 | 16 | |

Round Rubber End Stop Type B

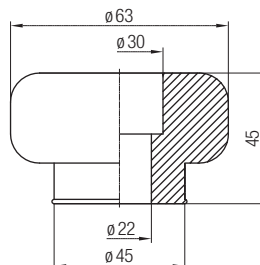


Technical details

- As position limitation e.g. for a certain suspension length. The fixed length will remain outside the reel.
- As limit buffer and damping device. Just connect the buffer with the desired press capacity to the cable. The buffer slides on the cable and prevents the control station from damages.
- The drilling can be slightly opened

| Order No. | Cable and Rope- ϕ | ϕE [mm] | ϕd_1 [mm] | Weight [kg] |
|-----------|------------------------|---------------|-----------------|-------------|
| 040495-14 | 10 - 14 | 14 | 14 | 0.1 |
| 040495-15 | 12 - 15 | 19 | 15 | |

Round Rubber End Stop Type C



Technical details

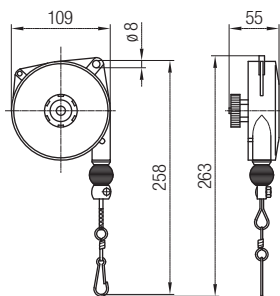
- As position limitation e.g. for a certain suspension length. The fixed length will remain outside the reel.
- As limit buffer and damping device. Just connect the buffer with the desired press capacity to the cable. The buffer slides on the cable and prevents the control station from damages.
- The drilling can be slightly opened
- Type C provided with a clamping piece

| Order No. | Cable and Rope- ϕ [mm] | Weight [kg] |
|-----------|-----------------------------|-------------|
| 040495-17 | 13 - 22 | 0.1 |



Retractors without Blocking Device

Balancer (040871) Load Capacity 0.4 to 3 kg

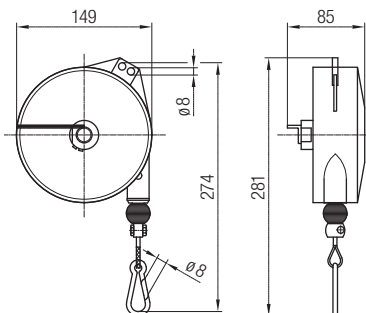


Technical details

- Case: die cast aluminum
- Rope: stainless steel wire \varnothing 2 mm
- Frictionless rope guide
- Adjustable lifting stop
- Additional safety suspension
- Polyamides rope thimble

| Order No. | Load Capacity [kg] | Cable Travel [m] | Weight [kg] |
|---------------|--------------------|------------------|-------------|
| 040871-01x1,6 | 0.4 - 1 | 1.6 | 0.6 |
| 040871-02x1,6 | 1 - 2 | | 0.6 |
| 040871-03x1,6 | 2 - 3 | | 0.7 |

Balancer (040871) Load Capacity 2 to 8 kg

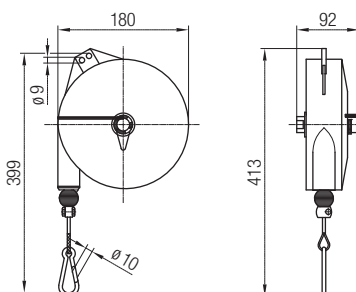


Technical details

- Case: die cast aluminum
- Rope: stainless steel wire \varnothing 2 mm
- Frictionless rope guide
- Adjustable lifting stop
- Additional safety suspension
- Fail safe spring mechanism
- Polyamides rope thimble

| Order No. | Load Capacity [kg] | Cable Travel [m] | Weight [kg] |
|---------------|--------------------|------------------|-------------|
| 040871-04x2,0 | 2 - 4 | 2.0 | 2.0 |
| 040871-06x2,0 | 4 - 6 | | 2.3 |
| 040871-08x2,0 | 6 - 8 | | 2.5 |

Balancer (040871) Load Capacity 2 to 14 kg



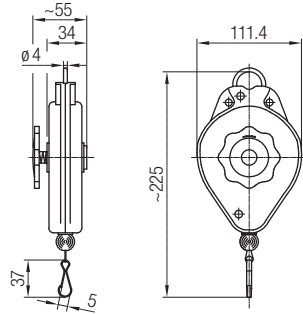
Technical details

- Case: die cast aluminum
- Rope: stainless steel wire \varnothing 2.5 mm
- Frictionless rope guide
- Adjustable lifting stop
- Additional safety suspension
- Fail safe spring mechanism
- Polyamides rope thimble

| Order No. | Load Capacity [kg] | Cable Travel [m] | Weight [kg] |
|---------------|--------------------|------------------|-------------|
| 040871-04x2,5 | 2 - 4 | 2.5 | 2.9 |
| 040871-06x2,5 | 4 - 6 | | 3.2 |
| 040871-08x2,5 | 6 - 8 | | 3.5 |
| 040871-10x2,5 | 8 - 10 | | 3.7 |
| 040871-12x2,5 | 10 - 14 | | 4.0 |

Retractors without Blocking Device

Balancer (040804) Load Capacity 0.5 to 2 kg

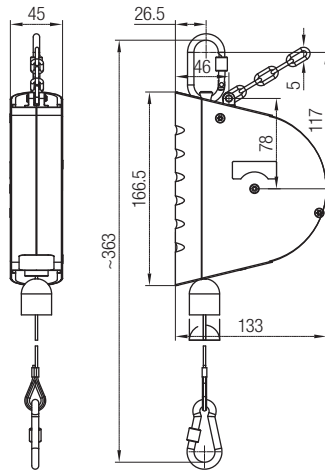


Technical details

- Case: wear resistant plastic
- Rope: \varnothing 2 mm, plastic
- Easy load setting
- Spring in riveted design

| Order No. | Load Capacity [kg] | Cable Travel [m] | Weight [kg] |
|----------------|--------------------|------------------|-------------|
| 040804-1,2x2,0 | 0.5 - 1.2 | 2.0 | 0.6 |
| 040804-2,0x2,0 | 1.0 - 2.0 | | |

Balancer (040814) Load Capacity 0.5 to 3 kg

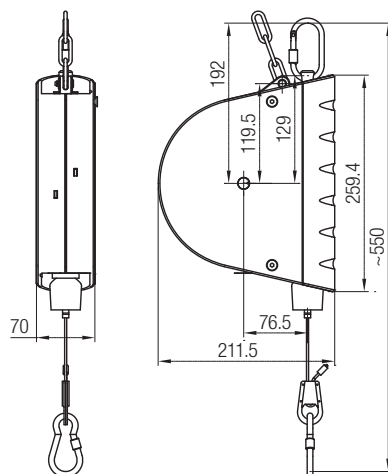


Technical details

- Case: impact- and abrasion resistant plastic
- Cable drum: abrasion resistant plastic
- Cable: high-strength galvanised steel cable \varnothing 2 mm with elastic cable stop buffer and spring hook for load suspension
- Suspension: rotating safety hook
- Spring: High-strength special suspension spring in riveted design, easy load setting

| Order No. | Load Capacity [kg] | Cable Travel [m] | Weight [kg] |
|---------------|--------------------|------------------|-------------|
| 040814-02x2,5 | 0.5 - 2 | 2.5 | 0.8 |
| 040814-03x2,5 | 1.5 - 3 | | |

Balancer (040824) Load Capacity 2 to 14 kg



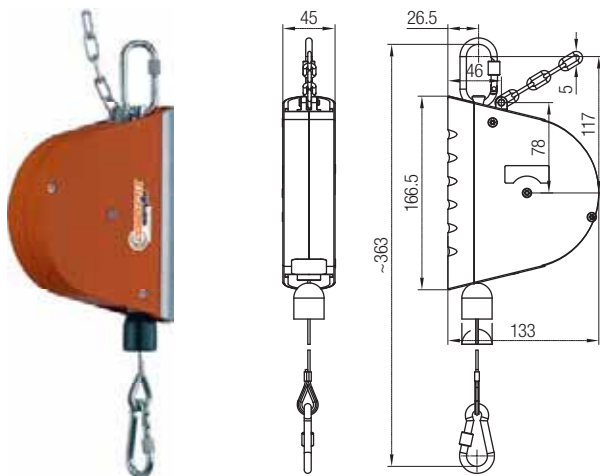
Technical details

- Case: impact- and abrasion resistant plastic
- Cable drum: abrasion resistant plastic
- Cable: high-strength galvanised steel cable \varnothing 2 mm with elastic cable stop buffer and screw-type spring hook for load suspension
- Suspension: rotating safety hook
- Spring: High-strength, banded special suspension spring load continuously adjustable

| Order No. | Load Capacity [kg] | Cable Travel [m] | Weight [kg] |
|---------------|--------------------|------------------|-------------|
| 040824-05x3,0 | 2 - 5 | 3.0 | 3.3 |
| 040824-08x3,0 | 4 - 8 | | 3.7 |
| 040824-10x3,0 | 7 - 10 | | 3.7 |
| 040824-14x3,0 | 10 - 14 | | 3.9 |

Retractors with Blocking Device

Balancer (040813) Load Capacity 0.5 to 3 kg

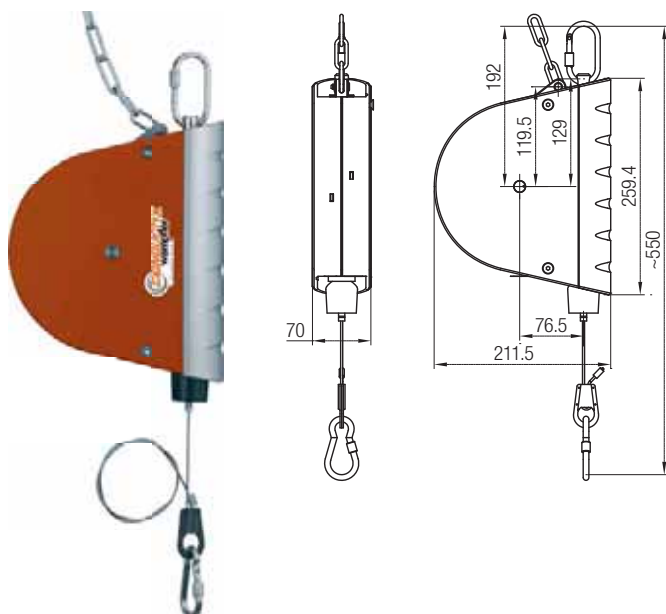


Technical details

- Case: impact- and abrasion resistant plastic
- Cable drum: abrasion resistant plastic
- Cable: high-strength galvanised steel cable \varnothing 2 mm with elastic cable stop buffer and spring hook for load suspension
- Suspension: rotating safety hook
- Spring: High-strength special suspension spring in riveted design, easy load setting

| Order No. | Load Capacity [kg] | Cable Travel [m] | Weight [kg] |
|---------------|--------------------|------------------|-------------|
| 040813-02x2,5 | 0.5 - 2 | 2.5 | 0.9 |
| 040813-03x2,5 | 1.5 - 3 | | |

Balancer (040823) Load Capacity 2 to 14 kg



Technical details

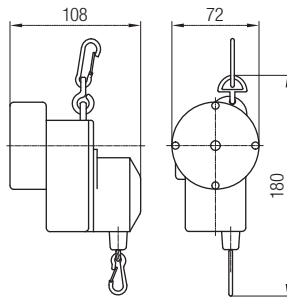
- Case: impact- and abrasion resistant plastic
- Cable drum: abrasion resistant plastic
- Cable: high-strength galvanised steel cable \varnothing 2 mm with elastic cable stop buffer and screw-type spring hook for load suspension
- Suspension: rotating safety hook
- Spring: High-strength, banded special suspension spring load continuously adjustable

| Order No. | Load Capacity [kg] | Cable Travel [m] | Weight [kg] |
|---------------|--------------------|------------------|-------------|
| 040823-05x3,0 | 2 - 5 | 3.0 | 3.5 |
| 040823-08x3,0 | 4 - 8 | | 3.8 |
| 040823-10x3,0 | 7 - 10 | | 3.8 |
| 040823-14x3,0 | 10 - 14 | | 4.0 |



Balancers with Perfect Balance

Balancer (040836) Load Capacity 0.7 to 2.0 kg



Technical details

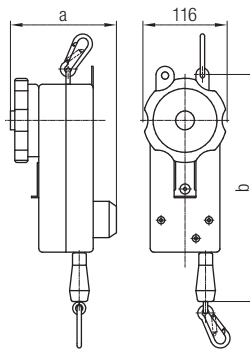
- Case: plastic
- Reel: plastic
- Rope: plastic, \varnothing 2 mm
- Spring safety hook
- With locking device

Note

On balancers adjusted load is balanced over the complete pull-out length!

| Order No. | Load Capacity [kg] | Cable Travel [m] | Weight [kg] |
|-----------------|--------------------|------------------|-------------|
| 040836-02,0x1,5 | 0.7 - 1.3 | 1.7 | 0.5 |
| 040836-02,5x1,5 | 1.0 - 2.0 | | |

Balancer (040836) Load Capacity 1.7 to 17.5 kg



Technical details

- Case: galvanised steel
- Reel: plastic
- Rope: galvanised steel, \varnothing 2 mm
- Automatic rope brake
- Rope can be locked in any position (easy change of load)
- Required traction adjustable at any working height

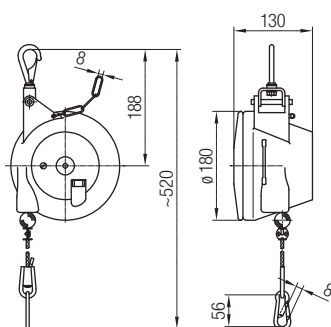
Note

On balancers adjusted load is balanced over the complete pull-out length!

| Order No. | Load Capacity [kg] | Cable Travel [m] | a [mm] | b [mm] | Weight [kg] |
|-----------------|--------------------|------------------|--------|--------|-------------|
| 040836-03,5x2,7 | 1.7 - 3.5 | 2.6 | 146 | 313 | 2.0 |
| 040836-05,5x2,7 | 3.0 - 6.0 | | | | 2.3 |
| 040836-07,0x2,7 | 4.0 - 7.0 | | | | 2.5 |
| 040836-09,0x2,7 | 5.5 - 9.0 | 2.6 | 174 | 320 | 3.3 |
| 040836-12,5x2,7 | 8.0 - 13.0 | | | | 3.4 |
| 040836-17,0x2,7 | 12.5 - 17.5 | | | | 3.8 |

Balancers with Optimum Balance of Weight

Balancer with Blocking Device (040832) Load Capacity 4.5 to 17 kg



Technical details

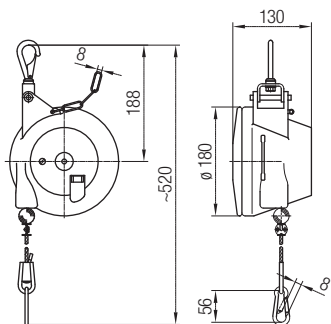
- Case: abrasion resistant and high-strength plastic
- Rope reel: wear resistant plastic, with integrated locking device
- Suspension: rotating and swiveling safety hook
- Riveted special bearing spring
- Steel rope: $\varnothing 5$ mm, galvanised, with elastic rope retracting limitation and screw snap hook to attach the load
- Load setting: stepless via positioning screw
- Rope turnbuckle for stepless rope length setting
- With safety chain and spring breakage safety device
- GS-certified for certified security

Note

On balancers adjusted load is balanced in the adjusted working height!

| Order No. | Load Capacity [kg] | Cable Travel [m] | Weight [kg] |
|---------------|--------------------|------------------|-------------|
| 040832-07x2,0 | 4.5 - 7.0 | 2.0 | 3.3 |
| 040832-10x2,0 | 6.0 - 10.0 | | 3.4 |
| 040832-14x2,0 | 9.0 - 14.0 | | 3.6 |
| 040832-17x2,0 | 13.0 - 17.0 | | 3.8 |

Balancer without Blocking Device (040831) Load Capacity 3 to 17 kg



Technical details

- Case: abrasion resistant and high-strength plastic
- Rope reel: wear resistant plastic, with integrated locking device
- Suspension: rotating and swiveling safety hook
- Riveted special bearing spring
- Steel rope: $\varnothing 5$ mm, galvanised, with elastic rope retracting limitation and screw snap hook to attach the load
- Load setting: stepless via positioning screw
- Rope turnbuckle for stepless rope length setting
- With safety chain and spring breakage safety device
- GS-certified for certified security

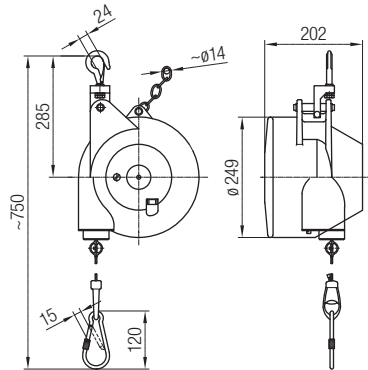
Note

On balancers adjusted load is balanced in the adjusted working height!

| Order No. | Load Capacity [kg] | Cable Travel [m] | Weight [kg] |
|----------------|--------------------|------------------|-------------|
| 040831-005x2,0 | 3.0 - 5.0 | 2.0 | 2.9 |
| 040831-007x2,0 | 4.5 - 7.0 | | 3.1 |
| 040831-010x2,0 | 6.0 - 10.0 | | 3.2 |
| 040831-014x2,0 | 9.0 - 14.0 | | 3.4 |
| 040831-017x2,0 | 13.0 - 17.0 | | 3.6 |

Balancers with Optimum Balance of Weight

Balancer without Blocking Device (040831) Load Capacity 12 to 90 kg



Technical details

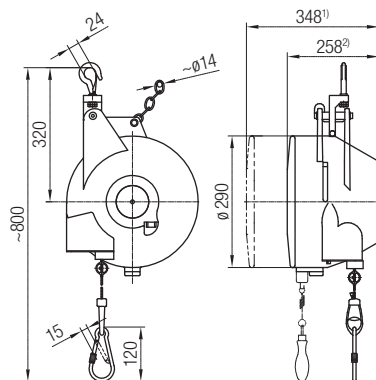
- Case: high-strength aluminum sand casting
- Rope reel: with integrated locking device
- Suspension: rotating and swiveling high security hook
- Fully locked special bearing spring with spring breakage safety device
- Steel rope: $\varnothing 5$ mm, galvanised, with elastic rope retracting limitation and screw snap hook to attach the load
- Load setting: stepless via positioning screw
- With safety expansion chain
- GS-certified for certified security

Note

On balancers adjusted load is balanced in the adjusted working height!

| Order No. | Load Capacity [kg] | Cable Travel [m] | Weight [kg] |
|----------------|--------------------|------------------|-------------|
| 040831-020x2,0 | 12 - 20 | 2.0 | 14.8 |
| 040831-030x2,0 | 20 - 30 | | 15.2 |
| 040831-045x2,0 | 30 - 45 | | 16.9 |
| 040831-060x2,0 | 45 - 60 | | 17.3 |
| 040831-075x2,0 | 60 - 75 | | 18.7 |
| 040831-090x2,0 | 75 - 90 | | 19.7 |

Balancer without Blocking Device (040831) Load Capacity 15 to 150 kg



Technical details

- Case: high-strength aluminum sand casting
- Rope reel: with integrated locking device
- Suspension: rotating and swiveling high security hook
- Fully locked special bearing spring with spring breakage safety device
- Steel rope: $\varnothing 5$ mm, galvanised, with elastic rope retracting limitation and screw snap hook to attach the load
- Load setting: stepless via positioning screw
- With safety expansion chain
- GS-certified for certified security

Note

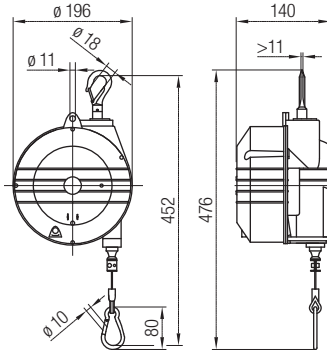
On balancers adjusted load is balanced in the adjusted working height!

- 1) at Weight >100 kg
- 2) at Weight <100 kg

| Order No. | Load Capacity [kg] | Cable Travel [m] | Weight [kg] |
|----------------|--------------------|------------------|-------------|
| 040831-025x3,0 | 15 - 25 | 3.0 | 25 |
| 040831-035x3,0 | 25 - 35 | | 26 |
| 040831-050x3,0 | 35 - 50 | | 27 |
| 040831-065x3,0 | 50 - 65 | | 28 |
| 040831-080x3,0 | 65 - 80 | | 29 |
| 040831-090x3,0 | 80 - 90 | | 30 |
| 040831-100x3,0 | 90 - 100 | | 32 |
| 040831-115x3,0 | 100 - 115 | | 42 |
| 040831-130x3,0 | 115 - 130 | | 44 |
| 040831-140x3,0 | 130 - 140 | | 46 |
| 040831-150x3,0 | 140 - 150 | | 48 |

Balancers with Optimum Balance of Weight

Balancer without Blocking Device (040874) Load Capacity 10 to 25 kg



Technical details

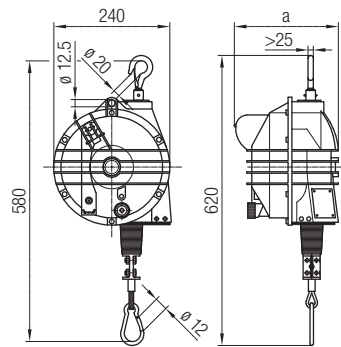
- Sturdy aluminum case
- Rope: stainless steel wire \varnothing 2.5 mm
- Rope guide: low friction
- Conical reel body with ball bearing
- Fine adjustment in the lifting area with continuous load adjustment
- Suspension: Rotating safety hook
- Blocking device (to fix or release the load at the requested height)
- Auxiliary safety suspension
- Fail safe spring mechanism
- Polyamides rope thimble

Note

On balancers adjusted load is balanced in the adjusted working height!

| Order No. | Load Capacity [kg] | Cable Travel [m] | Weight [kg] |
|----------------|--------------------|------------------|-------------|
| 040874-014x2,0 | 10 - 14 | 2.0 | 5.5 |
| 040874-018x2,0 | 14 - 18 | | 6.0 |
| 040874-022x2,0 | 18 - 22 | | 6.5 |
| 040874-025x2,0 | 22 - 25 | | 6.5 |

Balancer without Blocking Device (040873) Load Capacity 10 to 105 kg



Technical details

- Sturdy aluminum case
- Rope: stainless steel wire \varnothing 4 mm
- Rope guide: low friction
- Conical reel body with ball bearing
- Fine adjustment in the lifting area with continuous load adjustment
- Suspension: Rotating safety hook
- Blocking device (to fix or release the load at the requested height)
- Auxiliary safety suspension
- Fail safe spring mechanism
- Polyamides rope thimble
- Option: Release chain (see page 27)

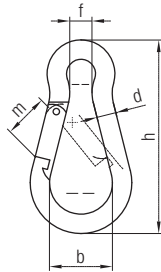
Note

On balancers adjusted load is balanced in the adjusted working height!

| Order No. | Load Capacity [kg] | Cable Travel [m] | a [mm] | Weight [kg] |
|----------------|--------------------|------------------|--------|-------------|
| 040873-015x2,0 | 10 - 15 | 2.0 | 215 | 10.3 |
| 040873-020x2,0 | 15 - 20 | | | 10.6 |
| 040873-025x2,0 | 20 - 25 | | | 11.2 |
| 040873-030x2,0 | 25 - 30 | | | 11.5 |
| 040873-035x2,0 | 30 - 35 | | | 11.8 |
| 040873-045x2,0 | 35 - 45 | | | 12.4 |
| 040873-055x2,0 | 45 - 55 | | | 12.5 |
| 040873-065x2,0 | 55 - 65 | | | 13.6 |
| 040873-075x2,0 | 65 - 75 | 2.0 | 250 | 14.5 |
| 040873-090x2,0 | 75 - 90 | | | 17.3 |
| 040873-105x2,0 | 90 - 105 | | | 18.0 |

Accessories for Balancer

Spring safety hook



Technical details

- The snap hook is for the fixation of balancers and their load
- Material: galvanised steel

| Order No. | d [mm] | h [mm] | f [mm] | b [mm] | m [mm] | Load Capacity [kg] | Weight [kg] |
|-------------|--------|--------|--------|--------|--------|--------------------|-------------|
| 040010-40x4 | 4 | 40 | 4 | 12 | 8 | 100 | 0.1 |
| 040010-53x6 | 6 | 60 | 5 | 16 | 8 | 120 | |
| 040010-90x9 | 9 | 60 | 9 | 25 | 10 | 250 | |

Safety Chain



Order No. 040499

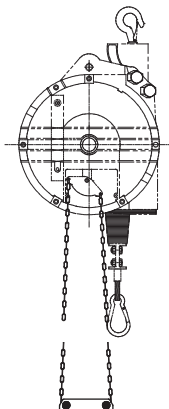
Technical details

- Length: 200 mm
- Load capacity: 100 kg
- Weight: 0.3 kg
- Material: galvanised steel

Note

The safety chain serves as protection against falling down.

Release Chain (040830-5)



Order No. 040830-5

Technical details

- Length: 800 mm
- Weight: 0.2 kg
- Release chain: galvanised steel
- Griff: plastic
- Application for balancer 040873

Note

The release chain is mounted to the blocking device of the balancer. This device serves to lock and release the load at the required height.

Application Directives

Information

Cable and Hose Reels

All the models are suitable for automatic or hand operation. Varied attachment possibilities allow an installation under nearly all operation conditions.

The cases are made up of simultaneous impact resistant and insulating material, through the use of PVC plastic cables constant against ozone, UV rays, oils, etc.

- In the cable inlet, each hose reel disposes of a mouth piece and a stop device with a gear segment return stop for distance of approx. 0.5 m (refer to the corresponding operation instruction).
- The return stop can be easily and quickly activated respectively deactivated. The handle height of the cable can be individually adjusted by means of a rubber stop.
- Prior to commissioning the cable reel must be protected with an appropriate safety device or with a safety automate, whereas the situation „reel wound up“ (see identification plate or table) must be taken as a basis for the determination of the safety element.

Balancer

Required for the selection of a balancer:

- Choose the size of the balancer with regard to the total weight to be suspended (tool plus accessories) and to the requested hoist.
- Try to use the upper zone of the balancer's load capacity data if possible.

Installation of the balancer:

- For safety reasons always use a 2nd load stop device, to prevent the load from falling down.
- The balancer has been arranged for vertical operation. A non-vertical hoist will produce permanent abrasion. We therefore recommend to use cable trolleys running within a track system, to guarantee a vertical pull. Please consider the Conductix-Wampfler catalogue "tasksaver systems No. 401".
- If several balances are operated very close to each other, suspend them at different heights to prevent collisions.
- The spring tension is adjusted to the max load area.
To release the initial tension turn the screw counterclockwise. To tension the spring turn the screw clockwise.
To release the spring turn counterclockwise.

Warning

- It is not allowed to lift and transport people with the products listed in the catalogue.
- Check the prescribed requirements and laws.
- Make sure that the equipment and load carrying devices, on which the hoist units will be suspended, are sufficiently dimensioned and provide the necessary stability for the hoist inclusively hanging charge.
- Read all operating instructions and warnings carefully.
- Do not overload the hoist unit.
- All operators working on cranes and hoist units as well as assisting persons have to be introduced into their work. load is forbidden.
- Standing under the pending load is forbidden.
- Attention when adjusting the balancer.

Information

We reserve the right to carry out modifications to the product in the course of technical development at time without prior notice.

All our equipment is in accordance with CE.

Our after sales service includes an expert repair team to refit material if required. If repair is not possible we will offer you a suitable replacement.

Please note our general terms of business. We will send them to you on request.

Reprint, even in parts, is only permitted with our approval.

Your Applications - our Solutions!

Ergonomic Handling Systems by Conductix-Wampfler represent only one of the many solutions made possible by the broad spectrum of Conductix-Wampfler components for the transport of energy, data and fluid media. The solutions we deliver for your applications are based on your specific requirements. In many cases, a combination of several different Conductix-Wampfler systems can prove advantageous. You can count on all of Conductix-Wampfler's Business Units for hands-on engineering support - coupled with the perfect solution to meet your energy management and control needs.



Cable reels

Motorized reels and spring reels by Conductix-Wampfler hold their own wherever energy, data and media have to cover the most diverse distances within a short amount of time - in all directions, fast and safe.



Festoon systems

It's hard to imagine Conductix-Wampfler cable trolleys not being used in virtually every industrial application. They're reliable and robust and available in an enormous variety of dimensions and designs.



Conductor rails

Whether they're enclosed conductor rails or expandable single-pole systems, the proven conductor rails by Conductix-Wampfler reliably move people and material.



Non-insulated conductor rails

Extremely robust, non-insulated conductor rails with copper heads or stainless steel surfaces provide the ideal basis for rough applications, for example in steel mills or shipyards.



Energy guiding chains

The "Jack of all trades" when it comes to transferring energy, data, air and fluid hoses. With their wide range, these energy guiding chains are the ideal solution for many industrial applications.



Slip ring assemblies

Whenever things are really "moving in circles", the proven slip ring assemblies by Conductix-Wampfler ensure the flawless transfer of energy and data. Here, everything revolves around flexibility and reliability!



Inductive Power Transfer IPT®

The no-contact system for transferring energy and data. For all tasks that depend on high speeds and absolute resistance to wear.



Reels, retractors and balancers

Whether for hoses or cables, as classical reels or high-precision positioning aids for tools, our range of reels and spring balancers take the load off your shoulders.



Jib boom

Complete with tool transporters, reels, or an entire media supply system - here, safety and flexibility are key to the completion of difficult tasks.



Conveyor systems

Whether manual, semiautomatic or with Power & Free – flexibility is achieved with full customization concerning layout and location.

www.conductix.com

Conductix-Wampfler AG

Rheinstrasse 27+33
79576 Weil am Rhein
Germany

Hotline

Phone +49 (0) 7621 662-222

Phone +49 (0) 7621 662-0

Fax +49 (0) 7621 662-144

info.de@conductix.com

www.conductix.com



Ⓞ DELACHAUX GROUP