

# Collector Column EEx de S-600 and S-600T with centre tube

## Application:

The S-600 slip ring unit has a higher throughput current than the S-300. This unit offers a numerous combinations of rings for power and signals.

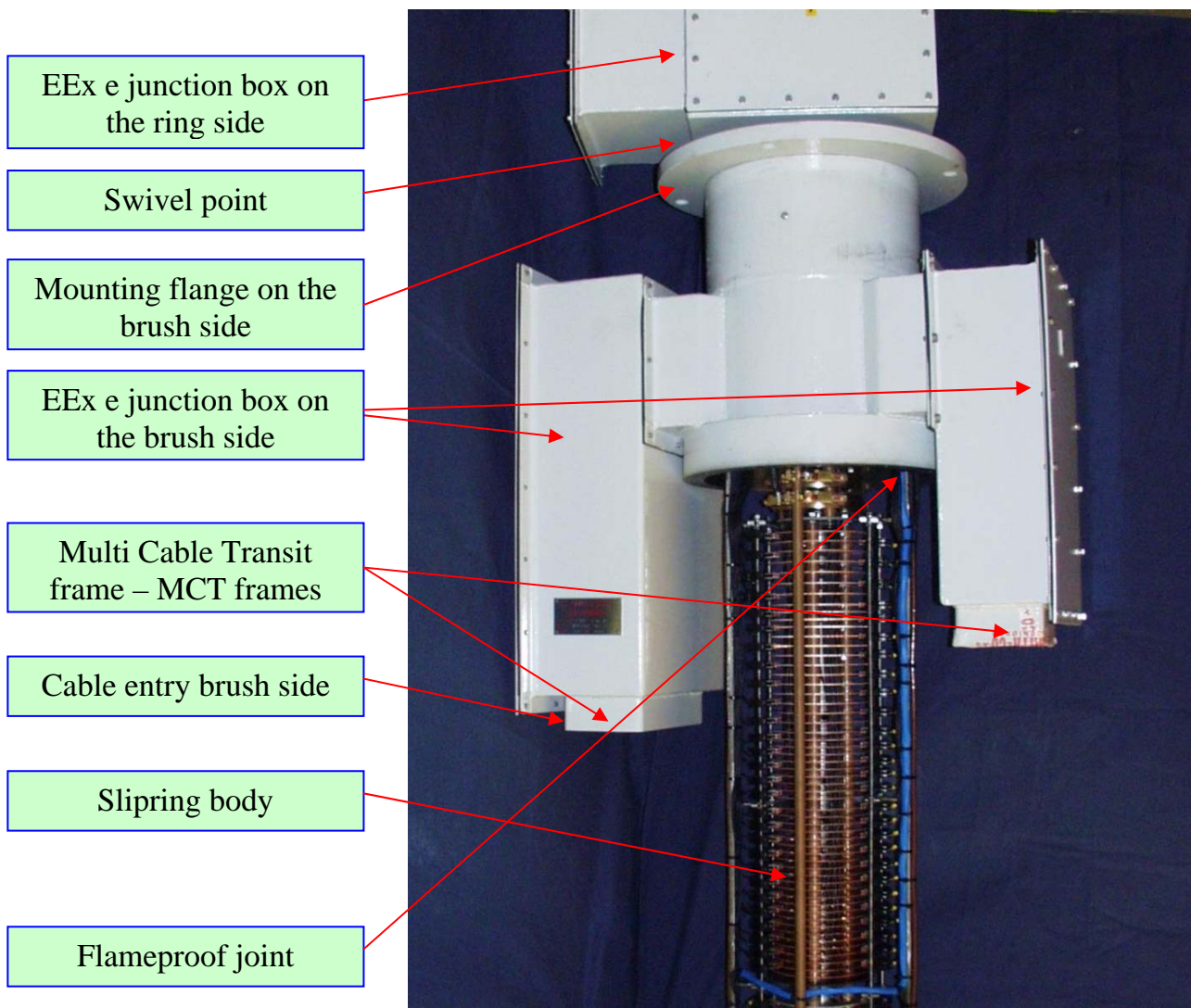
The S-600 can be equipped with two integrated EEx e junction boxes on both ring and brush side.

All EEx e junction boxes can be provided with necessary EEx e cable glands or frames for Multi Cable Transit (MCT). The junction boxes vary in size according to current size, type of signals and amount of rings.

The flameproof joint is L shaped and the unit fulfils the old requirements for IIC classification.

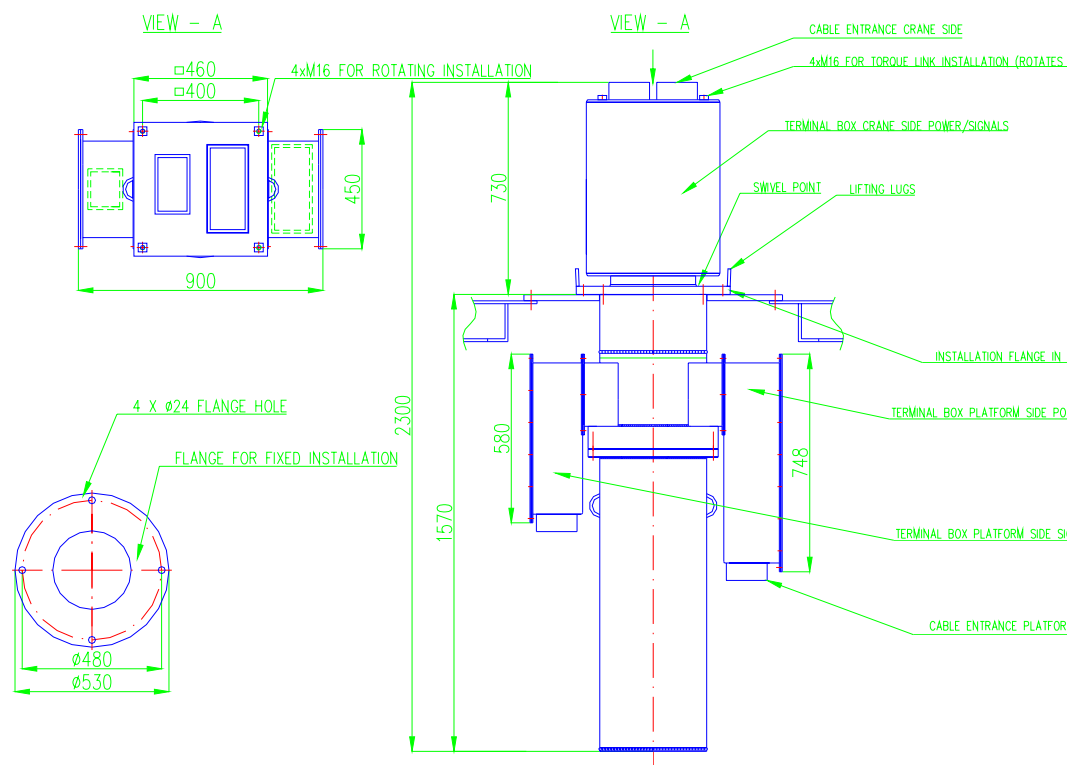
The unit can be mounted both horizontally and vertically. The mounting flange is located on the brush side.

This unit is always configured and built according to specifications given by the customer.



## Technical characteristics of S-600 and S-600T

<b>Ex-code:</b>	II 2 G EEx de IIB T5/T4
<b>Certificate:</b>	NEMKO 03ATEX1473
<b>Configuration:</b>	Customized
<b>Max current:</b>	12 rings 600A (T4) at 690V or 5 rings of 100A (T5) at 6600V
<b>Rated Voltage:</b>	Up to 6600V
<b>IP-grade:</b>	IP 56
<b>Rings:</b>	Brass, copper, silver plated copper and gold plated copper
<b>Brushes:</b>	Copper alloy and silver graphite
<b>Cable entries:</b>	Prepared for EEx e cable glands or Multi Cable Transit frames
<b>Housing:</b>	Painted carbon steel as standard
<b>Painting:</b>	According to offshore standard, NORSOK
<b>Junction boxes:</b>	<b>Brush side:</b> 2 off up to 1058x558x320mm <b>Ring side:</b> 2 off up to 500x500x1000mm with segregation
<b>Options:</b>	Centre tube for air / hydraulic, up to Ø85/75 mm The whole unit made of stainless steel
<b>Heater:</b>	Standard 230VAC self regulated anti condensation heater, approx. 100W. Other voltages available
<b>Weight:</b>	Approx. 5-600 kg



### Typical configuration:

Type	Number of rings	Power	Signals
S-600 or S-600T	71+PE	6 rings 400A/690VAC+PE 21 rings 25-50A/415VAC	33 rings 10A/24VDC 10 rings silver for IS

**Other configurations are available on request.**